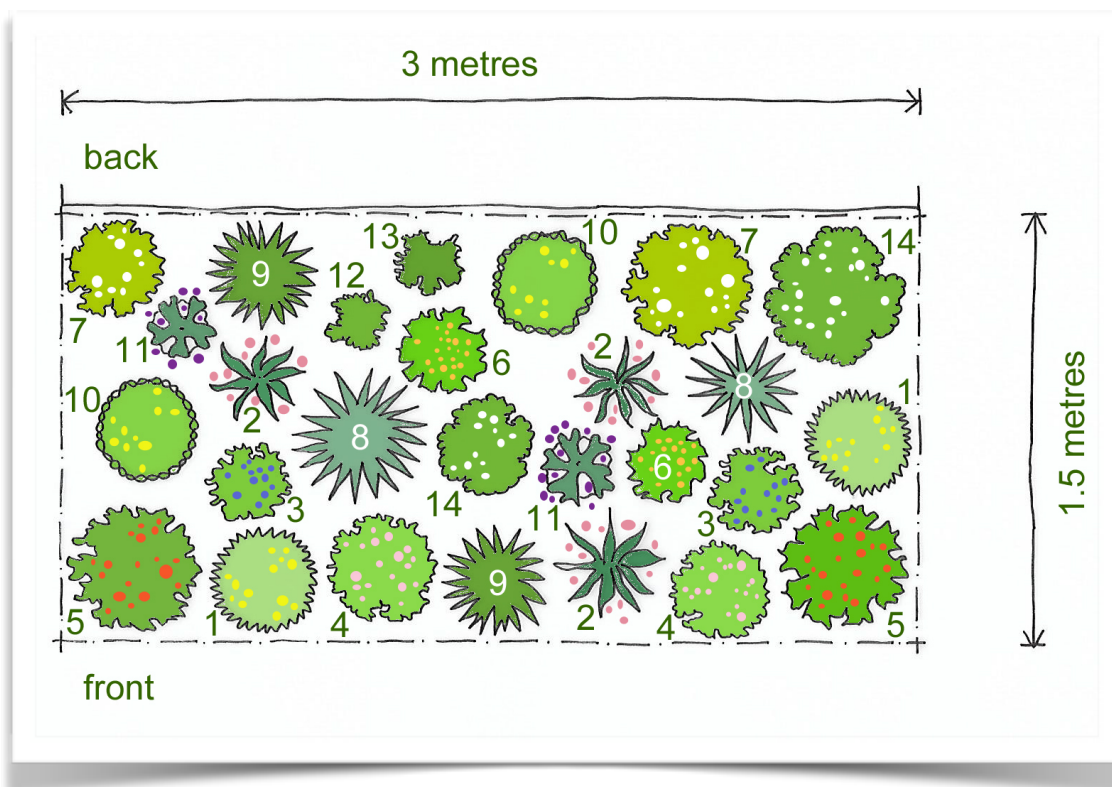


Rosy Hardy's Plan for a Sunny Border



1. [ANTHEMIS tinctoria E.C Buxton](#) x 3
2. [GAURA 'Rosy Shimmers'](#) x 3 Please note these are best planted in Spring
3. [GERANIUM 'Brookside'](#) x 2
4. [GERANIUM sanguineum var. striatum](#) x 2
5. [GEUM 'Scarlet Tempest'](#) x 2
6. [GEUM 'Totally Tangerine'](#) x 2
7. [LEUCANTHEMUM](#) x 2
8. [MISCANTHUS sinensis 'Morning Light'](#) x 2
9. [MOLINIA caerulea subsp caerulea heidebraut](#) x 2
10. [RUDBECKIA fulgida var speciosa](#) x 2
11. [SALVIA nemorosa 'Caradonna'](#) x 2
12. [SYMPHYOTRICHUM 'Little Carlow' \(cordifolius hybrid\)](#) x 1
13. [VERNONIA](#) x 1
14. [VERONICASTRUM virginium 'Diane'](#) x 2