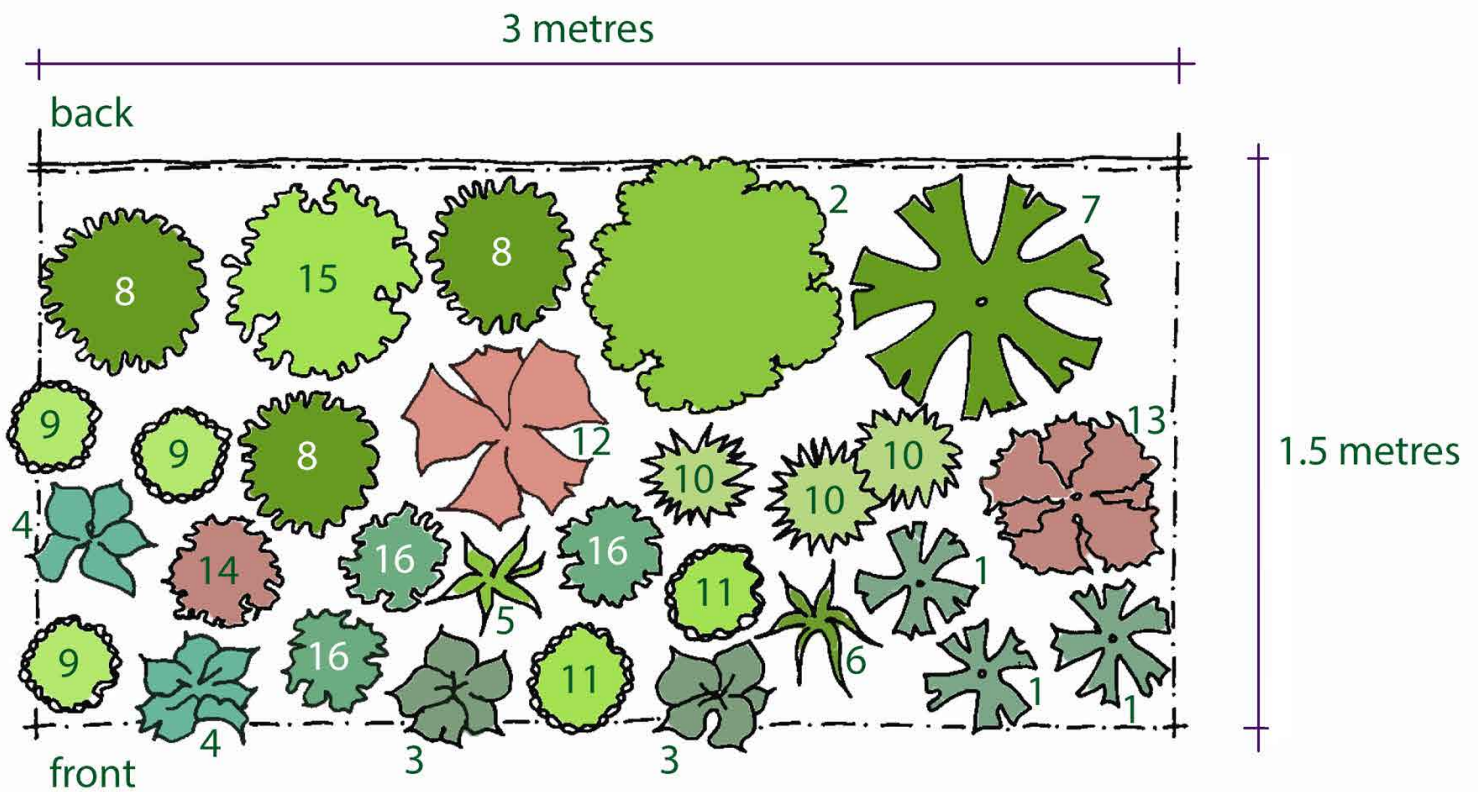


Rosy's Planting Plan for a Border with Moisture Retentive Soil Sunny to Partially Shaded Site



1. ASTILBE 'Hennie Graafland' (simplicifolia hybrid)
2. SANGUISORBA obtusa
3. HOSTA 'Purple Heart'
4. INULA hookeri
5. HEMEROCALLIS 'Irish Elf'
6. IRIS pseudacorus nana
7. LIGULARIA 'The Rocket'
8. LOBELIA x speciosa 'Pink Elephant'
9. LYCHNIS flos-cuculi 'White Robin'
10. PRIMULA florindae
11. PRIMULA japonica 'Miller's Crimson'
12. RHEUM 'Ace of Hearts'
13. RODGERSIA podophylla
14. SANGUISORBA menziesii
15. CIRSIUM rivulare 'Atropurpureum'
16. TROLLIUS cultorum 'Lemon Queen'