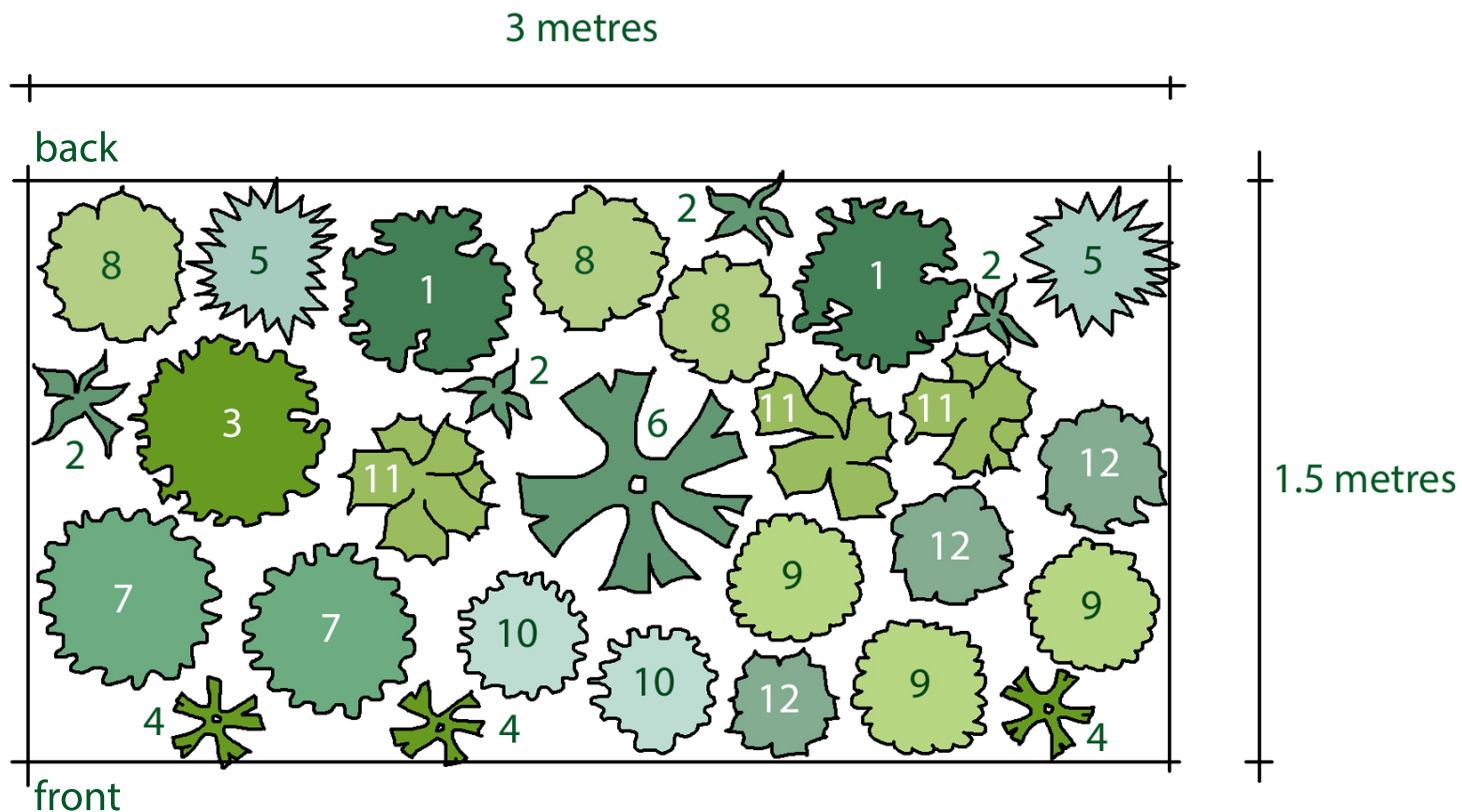


Rosy's Planting Plan for a White Border

Sun or Part Shade, Reasonable Soil



The Plant Key - with alternatives or suggestions for substitutes

1. *Ageratina altissima* 'Chocolate' (*Eupatorium rugosum* 'Chocolate')
2. *Allium stipitatum* 'Mount Everest'
3. *Helleborus* (Rodney Davey Marbled Group) Moondance
4. *Gymnaster savatieri* or *Iberis sempervirens*
5. *Miscanthus sinensis* 'Morning Light'
6. *Paeonia emodi* or *Paeonia lactiflora* 'Duchesse de Nemours'
7. *Persicaria* 'Alba Junior'
8. *Phlox paniculata* 'David' or *Phlox paniculata* 'Mount Fuji'
9. *Scabiosa* any white flowered variety
10. *Stachys byzantina* 'Silver Carpet'
11. *Symphytotrichum latiflorum* 'Chloe'
12. *Veronica gentianoides* 'Tissington White'

For Mail Order. Our mail order team is very small, so we're unable to advise you on bespoke design, the specific numbers of plants you'll need for borders which are bigger or smaller than the plans detail, or to complete quotes for online purchasing. We can only do this type of work if you call into the nursery. If you wish to purchase the plants online, use the links in the plans to find the plants. We may not have all the plants listed on the plans for mail order delivery at any one time. Our nursery shop often has alternatives and substitutes, but we can only advise and provide these if you call in to see us.