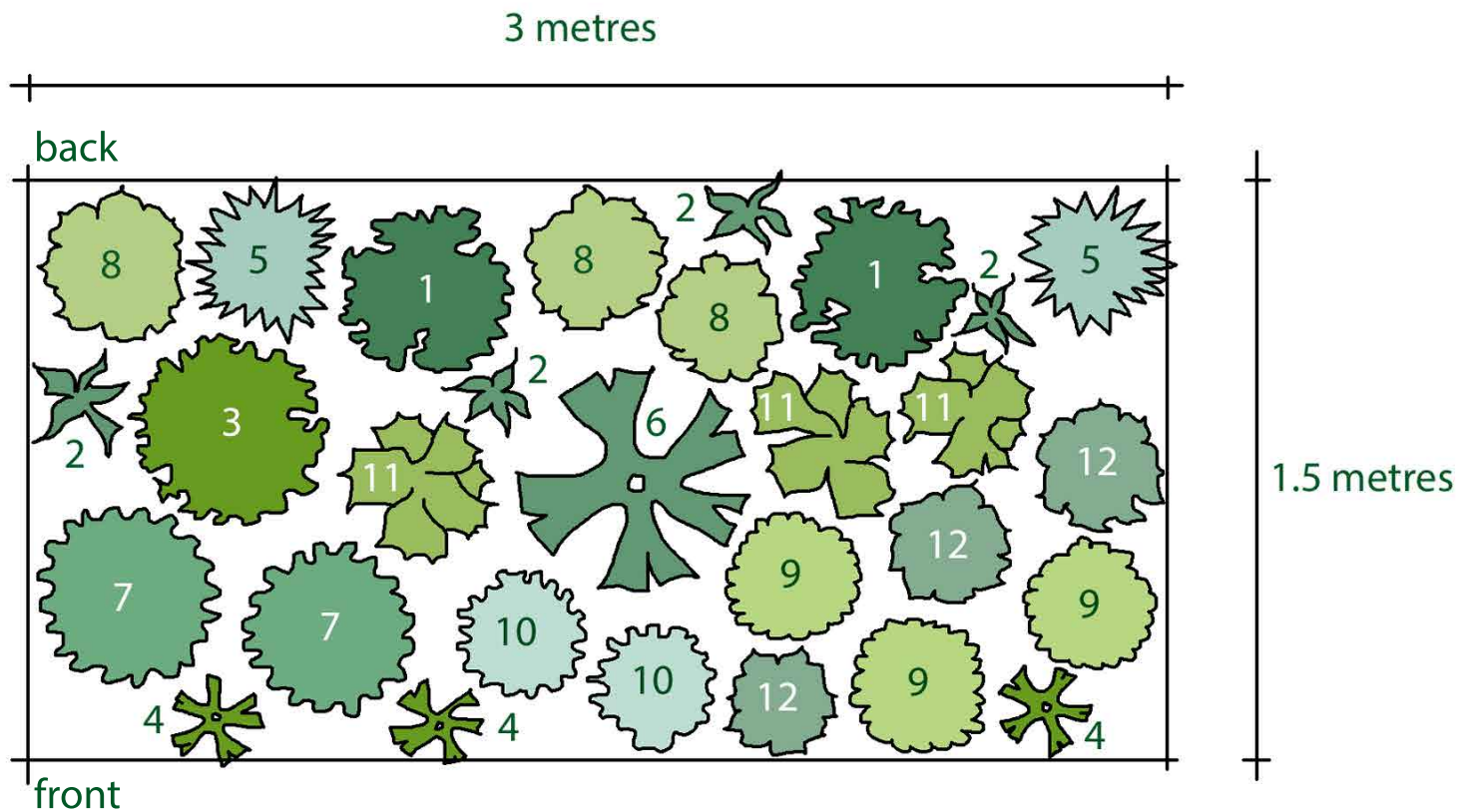


Rosy's Planting Plan for a White Border

Sun or Part Shade, Reasonable Soil



1. *AGERATINA altissima* 'Chocolate' also known as *EUPATORIUM rugosum* 'Chocolate'
2. *ALLIUM stipitatum* 'Mount Everest'
3. *EUONYMUS fortunei* 'Emerald Gaiety'
4. *IBERIS gibraltarica* 'Betty Swainson' or *IBERIS sempervirens*
5. *MISCANTHUS sinensis* 'Morning Light'
6. *PAEONIA emodi* or *PAEONIA lactiflora* 'Duchess de Nemours'
7. *PERSICARIA Alba Junior*
8. *PHLOX paniculata* 'David' or *PHLOX paniculata* 'Mount Fuji'
9. *SCABIOSA* 'Kudo White' (Kudo Series)
10. *STACHYS byzantina* 'Silver Carpet'
11. *SYMPHYOTRICHUM latiflorum* 'Chloe'
12. *VERONICA gentianoides* 'Tissington White'